



KEEP AMERICA BEAUTIFUL AFFILIATE

By the Way

Helping people make a difference in Westmoreland County

Spring 2026

Heard of “Adopt a Highway”? How about “Adopt a Drain” ... at least unofficially?

Keeping storm drains free of debris and litter might seem like a small thing, but it plays a big role in protecting our community, waterways, and neighborhoods.

Storm drains are designed to carry rainwater away from streets and sidewalks to prevent flooding. Anything that goes into a storm drain usually flows directly into a nearby creek, river, or lake. Unfortunately, when yard waste and trash flow through these drains it can harm our local waterways. Litter like plastic bottles, food wrappers, and cigarette butts can harm wildlife, pollute the water, degrade water quality, and eventually become the dreaded microplastics.

Surprisingly even yard waste entering waterways through storm drains can be detrimental to the environment and to our health. When the yard waste begins to decompose in water, it releases nutrients (phosphorus and nitrogen). These nutrients act as a fertilizer for algae triggering rapid growth. This sudden growth can lead to harmful cyanobacteria blooms that can cause skin irritation, diarrhea, and vomiting in humans and animals. To make it worse when these blooms eventually die the bacteria that decomposes the algae uses the oxygen in the water depleting the water of the necessary oxygen for fish, plants, and other aquatic life to live.

Besides the environmental impact of litter and yard waste at storm drains, public safety is also an issue. Leaves, trash, and other debris can build up so much at storm drains that the grates become clogged and rainwater has nowhere to go. This can lead to localized flooding, water pooling on roads,

and even damage to homes, businesses, and infrastructure.

The solution to this problem is simple and is something that we can all work towards.

1. Properly dispose of trash and remind others to do so as well.
2. Avoid accidental litter by making sure dumpsters' lids are closed and secure loads when transporting them.
3. Sweep up grass clippings and leaves, instead of blowing them out onto the road.

Now, if you participate in road cleanups or happen to live near a storm drain, I'm asking a little more. You can “unofficially adopt” a storm drain by helping keep the storm grates clean. You can do this by occasionally picking up the trash and cleaning off the leaves and branches that get stuck in the grates.

Safety Tips for Cleaning a storm drain.

1. **DO NOT** try to clean the drain grate with standing water on top of it
2. Clean the drain in dry weather – before rain is forecasted
3. Always wear gloves
4. Only pick up trash & debris on the surface
5. Never reach into storm drains
6. Wear bright clothing and be mindful of traffic

Regularly clearing debris helps keep streets safer and healthier for everyone. Clear drains help rainwater flow efficiently, reduce the risk of costly and dangerous flooding during storms, help prevent pollution, and protect local ecosystems, benefiting our community as a whole.

**WESTMORELAND
CLEANWAYS AND RECYCLING**

**2025 - 2026
BOARD OF DIRECTORS**

Officers

Serdar Bankaci, *President*
Barbara McMillen, *Vice President*
Renee L. Rosier, Ph.D., *Secretary*
Michael Porembka, *Treasurer*

Directors

Curt Fontaine, P.E.
Fred Goodman
Christopher Seaman
John Bacha
Matthew Pellis
Ryan Maher
Murat Bankaci

Staff

Michael Skapura,
Executive Director
Natalie Reese,
Assistant Exec. Director

**355 Pleasant Unity Mutual Road
Greensburg, PA 15601
Phone: 724-879-4020
Fax: 724-879-8576**

**website:
westmorelandcleanways.org**

**email:
info@westmorelandcleanways.org**



By the Way is published throughout the year by Westmoreland Cleanways and Recycling. Copies may also be found on our web site:
www.westmorelandcleanways.org

Membership Update

After careful consideration, our organization will implement a **membership dues increase effective May 1, 2026**. This change is necessary to keep pace with rising operational costs and to maintain the quality of programs, events, and services we provide.

Our dues structure has been the same since our organization started over 20 years ago. We have done and will continue to do our very best to utilize this money most efficiently to support our daily functions here at Westmoreland Cleanways.

We are grateful for your continued membership and support. Your involvement helps us sustain and grow the initiatives that benefit our entire community.

Our new Membership Dues fees will be:

Individual - \$10	Lifetime Individual - \$100
Family - \$25	Lifetime Family - \$300
Municipal - \$40	
Business - \$50	
Corporate - \$100	Lifetime Corporate - \$500

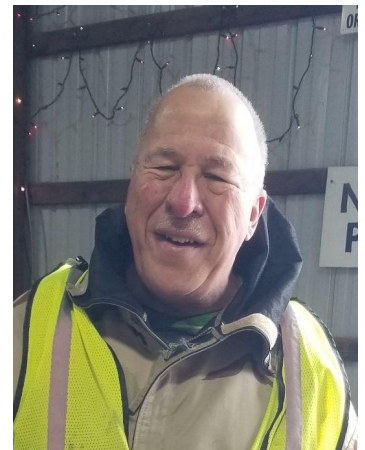
Our staff and our Board of Directors truly appreciate your support. We graciously thank you for being a valued member. Without your support, we could not do what we do.

We hope to see you at the Recycling Center soon. Remember at Westmoreland Cleanways, we encourage everyone to find ways to:

- 1.) **R**educe their waste
- 2.) **R**e-use materials
- 3.) **R**ecycle what they can and properly dispose of what they can't.

Mr. Steve Hoffman, Volunteer of the Year

Steve started helping at the center in 2024 and was a dedicated Monday afternoon volunteer. During 2025, he added Wednesdays to his commitment. Steve has donated hundreds of hours of his time to help keep the cars moving smoothly and quickly through the recycling center. Whether it's sorting materials, educating visitors on proper recycling practices, or just lending a helping hand, he always approaches his work with a positive attitude and an incredible work ethic. Steve's contributions have made a tangible difference and we are incredibly lucky to have such a dedicated volunteer!





Westmoreland Cleanways and Recycling

Westmoreland Cleanways and Recycling is a non-profit 501(c)(3) organization that operates a recycling center for hard-to-dispose material, promotes community programs that address the proper disposal of solid waste, supports illegal dump and litter cleanups, and educates the public through presentations, print and digital media. We are funded by the county commissioners, member fees, donations, sponsorships and grants.



Westmoreland Cleanways Recycling Center

Address:

355 Pleasant Unity Mutual Road
Greensburg, PA 15601

General Public Operating hours:

Monday: Noon - 5pm
Wednesday: 8am - 1pm
Friday 8am - 1pm
2nd Saturday of each month: 8:30 - Noon

Contact Information:

Website:
www.westmorelandcleanways.org
Email: info@westmorelandcleanways.org
Phone: 724-879-4020

Customers with large loads, please call the office to schedule a drop off

Separate material as follows for ease in unloading vehicles. When applicable, materials MUST BE clean of all food. When fees apply, cash, debit/credit and checks are accepted. Donations are never expected but are appreciated.

Plastics: #1-7 CONTAINERS ONLY, if apt twist lids back on bottles, **NO** straws, buckets, toys, pipes, or rigid plastic

Vinyl siding: 4 ft. or smaller in length

Glass bottles and jars: Sort by color: clear, brown, and green and blue together. **NO** lids/corks, window/sheet glass, ceramics, mirrors, Pyrex, candles, plug-in air fresheners

Refrigerant containing Appliances: e.g. frig, freezers, A/C, dehumidifiers, wine coolers **\$20.00/unit**

Scrap Metal: e.g. non-refrigerant appliances, propane tanks, gas grills, lawn mowers, car parts, tools, microwaves

Aluminum and Bi-Metal Cans: e.g. pop, soup, vegetable cans

Reusable mobility equipment: knee scooters, walkers, rollator walkers, canes, manual wheelchairs and shower benches. Must be in good condition-no rust, no missing parts.

Electronics: (partial list, call the office if in doubt)

- Whole, Intact, Complete TVs—all types and sizes
- Computer monitors— all types and sizes
- CPUs/Towers, Laptops, iPads, tablets, docking stations
- Disassembled/Striped CRTs and monitors **\$25/unit**
- Peripherals (mice, keyboards, computer speakers)
- Printers, Fax, Copy machines
- Desktop printer ink cartridges (*no toner cartridges*)
- Cell phones/telephone systems, answering machines
- Electrical cords, Extension cords, Christmas lights
- Cameras/Camcorders, VCR/DVD Players
- Testing equipment
- Radios, Stereos, tape/CD players (*no stand alone speakers*)

NO medical devices, small appliances— coffee pots, blenders, lamps, vacuum cleaners or rug scrubbers, tapes/DVDs/CDs

Lead Acid Batteries: (all other battery types collected during HHW event)

Uninterruptible Power Supplies (UPS)

Tires: (*Members receive a discount)

Passenger/Light Truck Tires:	\$4.00 Off Rim/\$5.00 On Rim*
Tractor Trailer:	\$15.00 Off Rim/ \$18.00 On Rim*
Agricultural/farm tractor:	\$80.00*
Highway/construction/heavy equipment:	\$80.00*

Bulbs and Fixtures:

Ballasts (PCB or non-PCB)	\$5.00 each
UV bulbs: e.g. for tanning bed, black light	\$7.00 each
Specialty bulbs: e.g. CFLs, fluorescent tubes 4ft or smaller, u-bend, halogen, HID, high pressure sodium, LED,	\$1.00 each
Fluorescent tubes, longer than 4ft.	\$2.00 each

Shoes: (both reusable and unusable)

EPS (expanded polystyrene) # 6 Foam (Styrofoam): White Block Packaging, Coolers, Colored and White food service trays (e.g. cups, plates, egg cartons, take out containers)

NO Packing peanuts, insulation, "Spongey" block packaging, or cloth -like sheets

Plastic Bags and Plastic Wrap: Must be clean, dry and free of residue

Store bags	Newspaper sleeves
Produce/Bread bags	Dry cleaning bags
Ice bags	Bubble wrap
Re-closable bags	Plastic mailers
Cereal box liners	Shrink wrap
Case overwrap	

NO net/mesh, perforated plastic bags, degradable/compostable, frozen food, pre-washed salad, candy/chip bags, mulch, soil, pet food, or 6-pack rings.

Paper (separate by type):

- Cardboard (corrugated, chip board, cereal boxes)
- Books (hard and softback)
- Sorted Office Paper (white; staples and paperclips OK)
- Newspaper (black and white, color inserts)
- Mixed paper (e.g. file folders, junk mail, magazines, phone books)
- Coroplast signs (corrugated plastic signs)

Growing Forward in 2026: New Spaces, Smarter Access, and a Fresh Digital Look

In 2026 Westmoreland Cleanways will be introducing several key improvements at the Recycling Center, including a newly constructed pavilion, the launch of a redesigned website, and an updated traffic pattern.

The pavilion will be located back by our pollinator garden. It will allow us to expand opportunities for programs such as recycling center tours, pollinator garden workshops, apiary tours, compost workshops, and volunteer and/or WCR member picnics. The possibilities are endless. Funding for the pavilion was donated through a few generous donors as well as from a NiSource Community Beautification and Greening Grant provided through Keep Pennsylvania Beautiful.

The updated traffic pattern will be a big undertaking, but anyone who has visited the center during one of our bi-monthly household hazardous waste (HHW) collection events, understands the necessity of it. Currently, when just a few vehicles arrive at the same time to drop off HHW, traffic can

easily become congested back by the drop off area. The new traffic pattern will eliminate this congestion as well as improve overall flow creating safer movement throughout the property.

Our current website was designed in 2017. Technology and the gadgets people use to access the internet have drastically changed since then. It was designed for use with a computer monitor in mind and not so much with a smartphone. The redesigned website WILL BE mobile friendly and with an updated layout hopefully will improve navigation and access to our information. It will also provide improved security.

I can't give you any timelines for when these improvements will take place as each is in a different stage of planning. What I can say is that the focus of ALL these changes is to enhance the overall visitor experience and improve accessibility at the center. With these changes Westmoreland Cleanways can better serve the community and its guests.

Spring Cleaning Goes Outdoors

In my position here at Westmoreland Cleanways, I drive around the county A LOT. All of this driving gives me an opportunity to really see the state of our roads. Truthfully, I'm embarrassed by the amount of trash I see. Especially this year when the Country is preparing for our 250th Anniversary.

Spring is the perfect time to rectify this situation, before the vegetation grows too high and hides the litter. Make a conscience effort to pick up 1 piece of litter a day, better yet take a trash bag out to fill on your daily walk or, plan a day with a few friends to clean up a specific spot... any "litter" bit helps.

Westmoreland Cleanways and Recycling can provide cleanup supplies (trash bags, safety vests, gloves, a limited supply of "grabbers", and road signs). We can also help make arrangements with local municipal officials to collect the trash if necessary. Call the office at 724-879-4020 or email us for more details.

Keep PA Beautiful hosts [Pick UP PA](#) in coordination with the Great American Cleanup. While you do not have to register your cleanup efforts with Keep PA Beautiful to receive supplies from us, it would be helpful. Registering your event (even a 1 person event), is a great way for us to keep track of the litter collected, as well as all of the amazing hard work Westmoreland County citizens put forth. By registering, your event totals become part of a larger state wide (Pick-Up PA) and Countrywide (Great America Cleanup) effort.

This spring let's try to put in a "litter bit" of effort to help maintain the environmental qualities of our county for the benefit of all who live, work, and visit here. And don't forget to report your litter collection totals through PICK UP PA!!



Household Hazardous Waste Collection



1st and 3rd Wednesday of the month
\$0.80/lb. credit or debit card only

8:00 am - 1:00 pm
In building #8

HHW is only accepted when Noble Environmental is on site. Westmoreland Cleanways employees are not permitted to handle HHW at any time and material cannot be stored on site. **For questions about acceptable materials, check with Noble Environmental, 412-567-6566.**

Accepted Household Hazardous Waste:

- 5 gallon containers or smaller
- Oil Based/Latex Paint/Stains/Varnish
- Putties, Adhesives, Glues
- Wood/Metal Finishing Products
- Water Sealers
- Flammable Liquids
- Batteries (any type)
- Light bulb/tube (any type)
- Antifreeze/Automotive Fluids and cleaners
- Household Cleaning Agents and moth balls
- Drain Cleaners
- Lawn & Garden products/Fertilizers/Herbicides/Pesticides

Prohibited items:

- Pool chemicals
- Explosives
- Ammunition
- Radioactive materials
- Pharmaceuticals & Medical Waste
- Syringes
- Smoke detectors
- Mercury containing devices
- Elemental mercury

Residents of some Westmoreland County municipalities have the option to recycle their HHW curbside through their garbage hauler. The service is built into the trash/recycling contract; however, additional fees may apply, and certain materials may be restricted. Where available, it is necessary to contact the hauler to SCHEDULE this service.

C
O
M
P
O
S
T

A
W
A
R
E
N
E
S
S

W
E
E
K

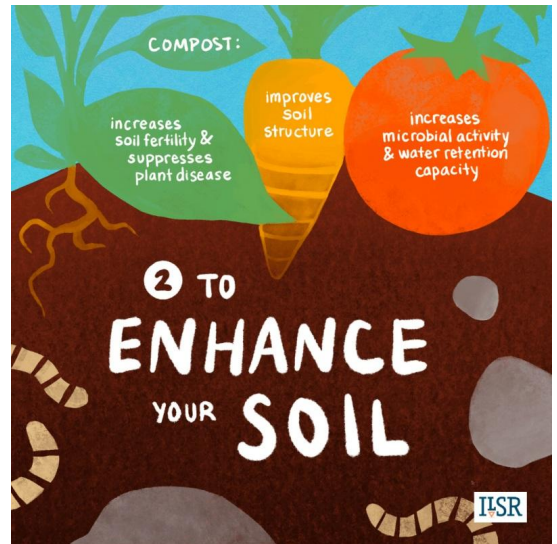
M
a
y

3rd

to

9th,

2
0
2
6



Our Award Winning Educator

We are going to take a moment to brag about our assistant executive director for a moment. While she has worked tirelessly for Westmoreland Cleanways for the past 14 years, she has recently received several, well deserved accolades for her work as our educator and outreach personnel.

Natalie was awarded The Environmental Stewardship Award-Education Sector at the Professional Recyclers of Pennsylvania conference in July. Then at the at the PAEE - Pennsylvania Association of Environmental Educators Conference in Gettysburg in March she was honored with the 2026 Outstanding Educator Award! She was also asked to be a speaker at the Keep Pennsylvania Beautiful Annual Summit in October and Keep America Beautiful National Summit in New Orleans in February.

Natalie loves going into the classrooms and scout groups to educate the next generation about the 3Rs and her excitement about the environment is contagious for the kids. It is really great to watch her work!



NexTrex Recycling Challenge Changes

NexTrex Recycling Challenge



How does the challenge work?

- Register on NexTrex.com to obtain access to the Trex Portal. Report recycling totals at my.trex.com
- Weigh, record and attach pictures
- Deliver collected plastic films/bags to a participating retailer for recycling (see list)
- 25 participating organizations are randomly selected each quarter and rewarded with a gift, valued at \$500
- Each 250 pounds is an entry into the drawing

What does Trex provide?

- Up to three recycling bins
- Posters
- Each participating organization receives a gift from Trex when they reach the first 250 pounds (annually), valued at \$100

What can I win?



Trex Bench



Solo Stove



Life-size Jenga



Life-size Connect 4



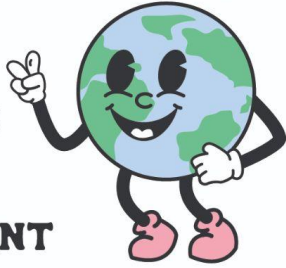
Pop-up Theater

Acceptable plastic: Grocery bags, bread bags, bubble wrap, dry cleaning bags, newspaper sleeves, ice bags, Ziploc and other resealable food storage bags, cereal bags, case wrappings, pallet wrap & stretch wrap, wooden pallet bags, and produce bag.

For more information of to register visit: NexTrex.com

2025 IN REVIEW BY THE NUMBERS

30,371 Vehicles
dropped off material



PUBLIC ENGAGEMENT

- Provided 175 educational programs to 6,400 youth and 600 adults
- Engaged 1,000 people at 7 table displays at various events
- 113 youth and adult volunteers donated 485 hours of their time

CLEANUPS

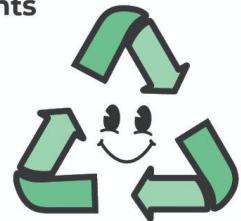
- 39 Cleanup events
- 2,010 Volunteers
- 770 Tires collected



**"THE NUMBERS HIGHLIGHT YOUR LOCAL COMMITMENT
TO ENVIRONMENTAL PROTECTION. THANK YOU."**

MATERIAL COLLECTED AND SHIPPED OUT FOR PROPER DISPOSAL

- 1,102,500 lbs. of electronics
- 536,407 lbs. of cardboard and paper
- 508,000 lbs. of scrap metal
- 215,620 lbs. of glass
- 148,750 lbs. of tires (more than 9,000 tires)
- 91,160 lbs. of plastic containers
- 89,190 lbs. of household hazardous waste
- 77,255 lbs. of plastic bags and film
- 26,000 lbs. of polystyrene
- 16,724 lbs. of metal cans
- 16,000 lbs. of lead acid batteries
- 12,000 lbs. of fluorescent lights
- 900 lbs. of shoes
- 1,508 Freon Appliances



Cleaner Celebrations Start Here: New Recycling Bins Ready to Borrow

I am pleased to announce the addition of new lids to our Clearstream Recycling Bin Loaner Program. For as long as I have worked here (14 years) we have loaned out recycling bins for community events, graduation parties, weddings, family reunions, and sporting events. The lids have always been blue and labeled for "Cans and Plastic Bottles." This year we have more options to offer to better fit the needs of your event and make it easier to sort the material if you are dropping it off at our Recycling Center. We have added two additional lid types, a green colored lid labeled "Plastic Bottles only", and a Peach colored lid labeled "Cans only."

These new lids were donated as a project for "Westmoreland County's America 250PA" commemoration. Like many other organizations in the County, we want to honor the United States 250th anniversary of the signing of the Declaration of Independence, but in our own unique, "cleanways" way. Therefore, in the summer of 2025 Westmoreland Cleanways set a goal to loan out 250 recycling bins by July 31, 2026. These new lids will hopefully help us achieve this goal.

Although we set the goal, we need support from county residents to actually reach the goal. If you are planning an event where there will be cans or plastic bottles thrown away, please contact us to borrow FREE recycling bins. Or, if you know someone who is planning an event please share this opportunity with them. We loan out recycling bins at NO CHARGE for special events that run 1-day, a few days or a few months. These bins can be borrowed by individuals, by organizations or by businesses. Please visit the website or contact us for more information.

<https://www.westmorelandcleanways.org/special-events-recycling/>



By the Way - Spring 2026



WESTMORELAND CLEANWAYS AND RECYCLING
355 PLEASANT UNITY MUTUAL ROAD
GREENSBURG, PA 15601

If you do not want to receive this newsletter, please call 724-879-4020 and ask to have your name removed from our mailing list.

What We're All About

Westmoreland Cleanways and Recycling is a non-profit 501(c)(3) organization whose mission is to protect, restore and maintain the environmental qualities of our county for the benefit of all who live, work, and visit herein. Westmoreland Cleanways accomplishes its mission by sponsoring and promoting programs that address the proper disposal of solid waste through recycling, special collections, and the cleanup of illegal dumpsites and littered areas. We educate the public through presentations, print media and the web.

Westmoreland Cleanways and Recycling operates a recycling center for hard-to-dispose material, initiates and facilitates programs by bringing together a network of volunteers, industry leaders, and state and local government representatives to provide services in the most efficient and economical manner. We are funded by the county commissioners, member fees, private donations, sponsorships and grants. Volunteers donate time, energy and expertise to carry out our mission.

Volunteers and new members are always welcome. Won't you call our office, visit us on the web, or attend a meeting to learn more about how you can be a part of Westmoreland Cleanways and Recycling?

~ MEETING NOTICE ~

Regular meetings are held at 6:00 PM at Westmoreland Cleanways' office, 355 Pleasant Unity Mutual Road, Greensburg, PA 15601, on the second Thursday of March, June, September and December. Call 724-879-4020 for information. Everyone is welcome.

We hope you enjoyed our newsletter. To support our activities, please become a member. Return this coupon and your payment to Westmoreland Cleanways, 355 Pleasant Unity Mutual Road, Greensburg, PA 15601

Date _____

Name: _____

Address: _____

City _____ Zip+4 _____

County: _____

Preferred Phone: _____ H / W / Cell

Email: _____

Individual \$10 Lifetime Individual \$100

Family \$25 Lifetime Family \$300

Municipal \$40

Organization/Business \$50

Corporation \$100 Lifetime Corporate \$500

Additional contributions are greatly appreciated.

Memberships and contributions are tax deductible, as defined by law

WE DO NOT SHARE OR SELL OUR MAILING LIST